



Shanghai Baud Data
Communication Co., Ltd.

Switch Series

BDCOM S1000 Series
Unmanaged Ethernet Switch

BDCOM S1000 Series Unmanaged Ethernet Switch

Product Overview

BDCOM S1000 Series is a high cost-effective unmanaged Ethernet switch designed by BDCOM for the network in medium and small offices.

BDCOM S1000 Series has eight models involving three series, 100M, gigabit uplink and full-gigabit, which satisfies the requirement of networks in different scales such as hotels, campuses, dormitories and other medium and small enterprises.

Product Specifications



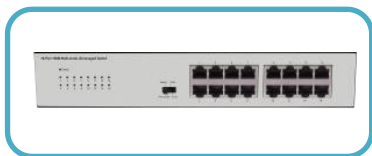
S1008C

- 8 100M TX ports
- AC-to-DC power adapter
- Dimensions (W×D×H): 140×67×26mm



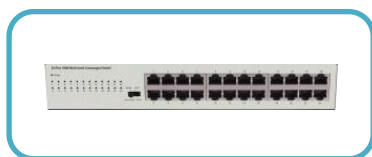
S1008D

- 8 100M TX ports
- 5V/1A power adapter
- Dimensions (W×D×H): 138*78*25mm



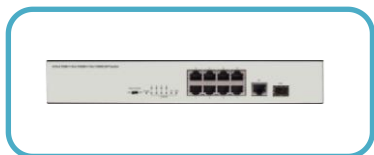
S1016C

- 16 100M TX ports
- Built-in AC power supply
- Dimensions (W×D×H): 280*125*44mm



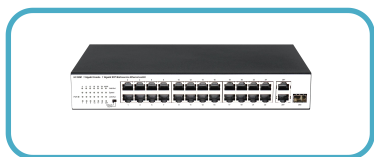
S1024C

- 24 100M TX ports
- Built-in AC power supply
- Dimensions (W×D×H): 280*125*44mm



S1210C

- 8 100M TX ports + 1 GE TX port + 1 GE SFP port
- Built-in AC power supply
- Dimensions (W×D×H): 280*125*44mm



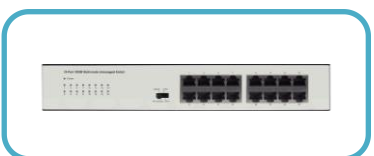
S1226L

- 24 100M TX ports + 1 GE Combo port + 1 GE TX port
- Built-in AC power supply
- Dimensions (W×D×H): 280*180*44mm



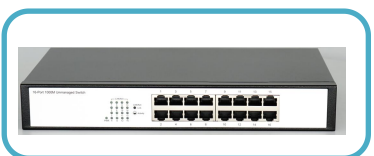
S1508E

- 8 GE TX ports
- 5V/1A power adapter (supports 5~12V wide voltage)
- Dimensions (W×D×H): 137*77*25mm



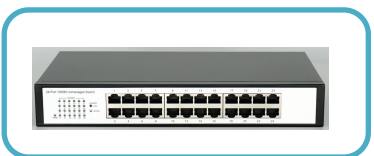
S1516D

- 16 GE TX port
- Built-in AC power supply
- Dimensions (W×D×H): 280*125*44mm



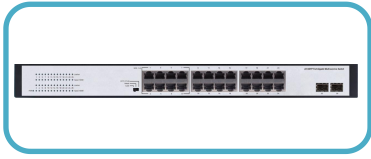
S1516v1

- 16 GE TX port
- Built-in AC power supply
- Dimensions (W×D×H): 294*178*44mm



S1524v1

- 24 GE TX port
- Built-in AC power supply
- Dimensions (W×D×H): 294*178*44mm



S1526E

- 24 GE TX ports + 2 GE SFP ports
- Built-in AC power supply
- Dimensions (W×D×H): 440*205*44mm



S1526v1

- 24 GE TX ports + 4 GE Combo SFP ports
- Built-in AC power supply
- Dimensions (W×D×H): 440*179*44mm



S1526D

- 24 GE TX ports + 2 GE SFP ports
- Built-in AC power supply
- Dimensions (W×D×H): 440*208*44mm



S1526C

- 24 GE TX ports + 2 GE SFP ports
- Built-in AC power supply
- Dimensions (W×D×H): 440*207*44mm

Product Characteristics

➤ Switching Characteristics

- Non-block switching architecture and wire-speed forwarding supported by all ports;
- Large-buffer and HD video;

- IEEE802.3x full duplex flow control and Backpressure half-duplex flow control;
- Multi-functional DIP (dial-up switch), satisfying the requirement of different networks

➤ **Reliability**

- Integrated professional thunder-proof electric circuit, high-grade thunder-proof design;
- Complies with CE, FCC;
- Contact and small, fit for water-proof cabinet in the outdoor monitoring scenarios and buildings;
- 0~50°C working temperature.

➤ **Practicability**

- Plug and play; no need of configuration;
- LED indicators to show working status and error information.

Product Specifications

Item	S1008C/S1008D	S1016C	S1024C	S1210C
Switching capacity	1.6G	3.2G	4.8G	5.6G
MAC	1K	8K	8K	8K
Service port	8 100M TX	16 100M TX	24 100M TX	8 100M TX
Uplink port	/	/	/	1 GE TX + 1 GE SFP
Functional DIP	/	standard, flow control, isolated, extended	standard, flow control, isolated, extended	/
Power supply	Power adapter	Built-in AC	Built-in AC	Built-in AC
Dimensions mm (WxDxH)	140*67*26 (1008C) 138*78*25 (1008D)	280*125*44	280*125*44	280*125*44
Item	S1226L	S1508D/S1508E	S1516D	S1526E
Switching capacity	8.8G	16G	32G	52G
MAC	16K	4K	8K	8K
Service port	24 100M TX	8 GE TX	16 GE TX	24 GE TX

Uplink port	1 GE Combo +1 GE TX	/	/	2 GE SFP
Functional DIP	/	standard, isolated, extended (only for S1508E)	standard, flow control, isolated, extended	standard, isolated, extended
Power supply	Built-in AC	Power adapter	Built-in AC	Built-in AC
Dimensions mm (WxDxH)	280*180*44	140*78*2 (1508D) 137*77*2 (1508E)	280*125*44	440*205*44
Item	1516v1	1524v1	S1526v1	S1526D
Switching capacity	32G	48G	52G	52G
MAC	8K	8k	8K	8K
Service port	16 GE TX	24 GE TX	24 GE TX	24 GE TX
Uplink port	/	/	2 GE Combo	2 GE SFP
Functional DIP	/	/	standard, flow control, aggregation, isolated	standard, flow control, isolated
Power supply	Built-in AC	Built-in AC	Built-in AC	Built-in AC
Dimensions mm (WxDxH)	294*178*44	294*178*44	440*179*44	440*208*44
heat dissipation	Fanless, noise-free cooling			
Environment	operating temperature/humidity: 0°C -50°C, 10%-90% non-condensing storage temperature/ humidity: -40°C -70°C; 5%-95% non-condensing			
Item	S1526C			
Switching capacity	52G			
MAC	8K			
Service port	24 GE TX			
Uplink port	2 GE SFP			
Functional DIP	standard, isolated, extended			
Power supply	Built-in AC			
Dimensions mm (WxDxH)	440*207*44			
heat dissipation	Fanless, noise-free cooling			
Environment	operating temperature/humidity: 0°C -50°C, 10%-90% non-condensing storage temperature/ humidity: -40°C -70°C; 5%-95% non-condensing			

Ordering Information

S1000 Series Unmanaged Switch

S1008C	8 100M TX ports, unmanaged, iron hull, fanless, external power adapter, desk-top installation
S1008D	8 100M TX ports, unmanaged, iron hull, fanless, external power adapter, desk-top installation
S1016C	16 100M TX ports, unmanaged, 4 DIP groups, large-buffer, thunder-proof, AC220V, fanless, 11-inch chassis, rack-mounted installation
S1024C	24 100M TX ports, unmanaged, 4 DIP groups, large-buffer, thunder-proof, AC220V, fanless, 11-inch chassis, rack-mounted installation
S1210C	8 100M TX ports + 1 GE TX port + 1 GE SFP port, unmanaged, large-buffer, thunder-proof, AC220V, fanless, 11-inch chassis, rack-mounted installation
S1226L	24 100M TX ports + 1 GE Combo port + 1 GE TX port, unmanaged, large-buffer, thunder-proof, AC220V, fanless, 11-inch chassis, rack-mounted installation
S1508D	8 100M TX ports, unmanaged, iron hull, fanless, external power adapter 5V/1A, desk-top installation
S1508E	8 100M TX ports, unmanaged, iron hull, fanless, external power adapter 5V/1A (supports 5~12V wide voltage), desk-top installation, 3 DIP groups, loop indicator
S1516D	16 GE TX ports, unmanaged, 4 DIP groups, large-buffer, thunder-proof, AC220V, fanless, 11-inch chassis, rack-mounted installation
S1516v1	16 GE TX ports, unmanaged, large-buffer, thunder-proof, AC220V, fanless, 11-inch chassis, rack-mounted installation
S1524v1	24 GE TX ports, unmanaged, large-buffer, thunder-proof, AC220V, fanless, 11-inch chassis, rack-mounted installation
S1526E	24 GE TX ports + 2 GE SFP ports, unmanaged, large-buffer, thunder-proof, AC220V, fanless, 19-inch chassis, rack-mounted installation
S1526v1	24 GE TX ports + 2 GE Combo ports, unmanaged, large-buffer, thunder-proof, AC220V, fanless, 19-inch chassis, rack-mounted installation
S1526D	24 GE TX ports + 2 GE SFP ports, unmanaged, large-buffer, thunder-proof, AC220V, fanless, 19-inch chassis, rack-mounted installation
S1526C	24 GE TX ports + 2 GE SFP ports, unmanaged, large-buffer, thunder-proof, AC220V, fanless, 19-inch chassis, rack-mounted installation

For More Information

For more information about [BDCOM S1000 Series](#), please contact your local BDCOM account representative.

Copyright ©Shanghai Baud Data Communication Co., LTD. 2022. All Rights Reserved.

This document is BDCOM Public Information.

BDCOM reserves the right to alter, update and otherwise change the information contained in the document from time to time without notice.

Shanghai Baud Data Communication Co., LTD.

No.123, Juli Road,
Pudong Zhangjiang High-Tech Park,

Shanghai 201203, China

www.bdc.com.cn

Tel: +86-21-50800666

